

OKLAHOMA CITY GUN CLUB

M1 For Vets Benefit Match

August 28th, 2016

RANGE LOCATION: Three miles north of Arcadia OK on Anderson road. At Sorghum Mill road, turn east, proceed ½ mile and turn left to enter the gate to the property.

RULES: Current CMP rules will govern. It is the competitor's responsibility to be familiar with the rules and the program.

ENTRY INFORMATION: Return name, address, with check or money order for individual entry to:

Dan Arnold
5205 Deerhurst Dr
Norman, OK 73072
(405) 206-9935
dsarnold@sbcglobal.net

Entries can be made in advance or by cash up to 30 minutes prior to the first relay being called to the line. Entries are limited to 92 individuals.

ENTRY FEES: John C. Garand Match \$20.00

.30 Caliber Match \$20.00

Prizes Donated by: Boyd's Gunstocks, Creedmoor Sports, Midway USA, Redding, and Sierra

MATCH SCHEDULE:

Sunday, 08:00 August 28th

John C. Garand Match - 30-shot As-Issued Military Rifle Match Course A for As-Issued or Unlimited Garands. The match is governed by the latest CMP Competition Rules. See other part of this program for entry information. Rifles will be in accordance with aforementioned regulations.

Ammunition to be furnished by competitors.

John C. Garand achievement pins will be awarded by the match sponsors in accordance with CMP Regulations.

Sunday, after the JCG Match August 28th

.30 Caliber Match - Styled after the President's Match: Any .30 caliber rifle conforming to the JCG as-issued or unlimited classes, 1903 Springfield, or Vintage Military Rifle definitions, or any .30 caliber U.S. Rifle Caliber .30 M1 or U.S. Rifle Caliber 7.62mm NATO M14 as defined by CMP rules, or any .30 bolt action Match Rifle as defined by NRA rules. President's Match course with two sighting shots in each stage of fire.

Ammunition to be furnished by competitors.

AMONG THE COMPETITOR'S DUTIES:

Competitors are required to be at their assigned points promptly to perform scoring duties and target operation.

GENERAL INFORMATION:

No lunch break—Bring whatever you require to sustain you through the matches.

You are welcome to camp at the club. Please call (405) 206-9935 if arriving before Saturday. Electricity and water are available at the range.

PLACES TO STAY:

Edmond:
Hampton Inn, 300 Meline Dr. (405)844-3037
Best Western, 2700 E. 2nd (405)216-0300

Oklahoma City:
Motel 6 12121 N. I-35 (405)478-4030

Guthrie:
Sleep Inn I-35 & Hwy 33 (405)260-1400

Directions to the OKC Gun Club:

From the intersection of I-35 & Hwy 66 (a.k.a. Edmond 2nd St. / Edmond Road), take Hwy 66 East **4.9 miles** to Westminster Road (Look for Pop's Convenience Store / Restaurant – the giant pop bottle)

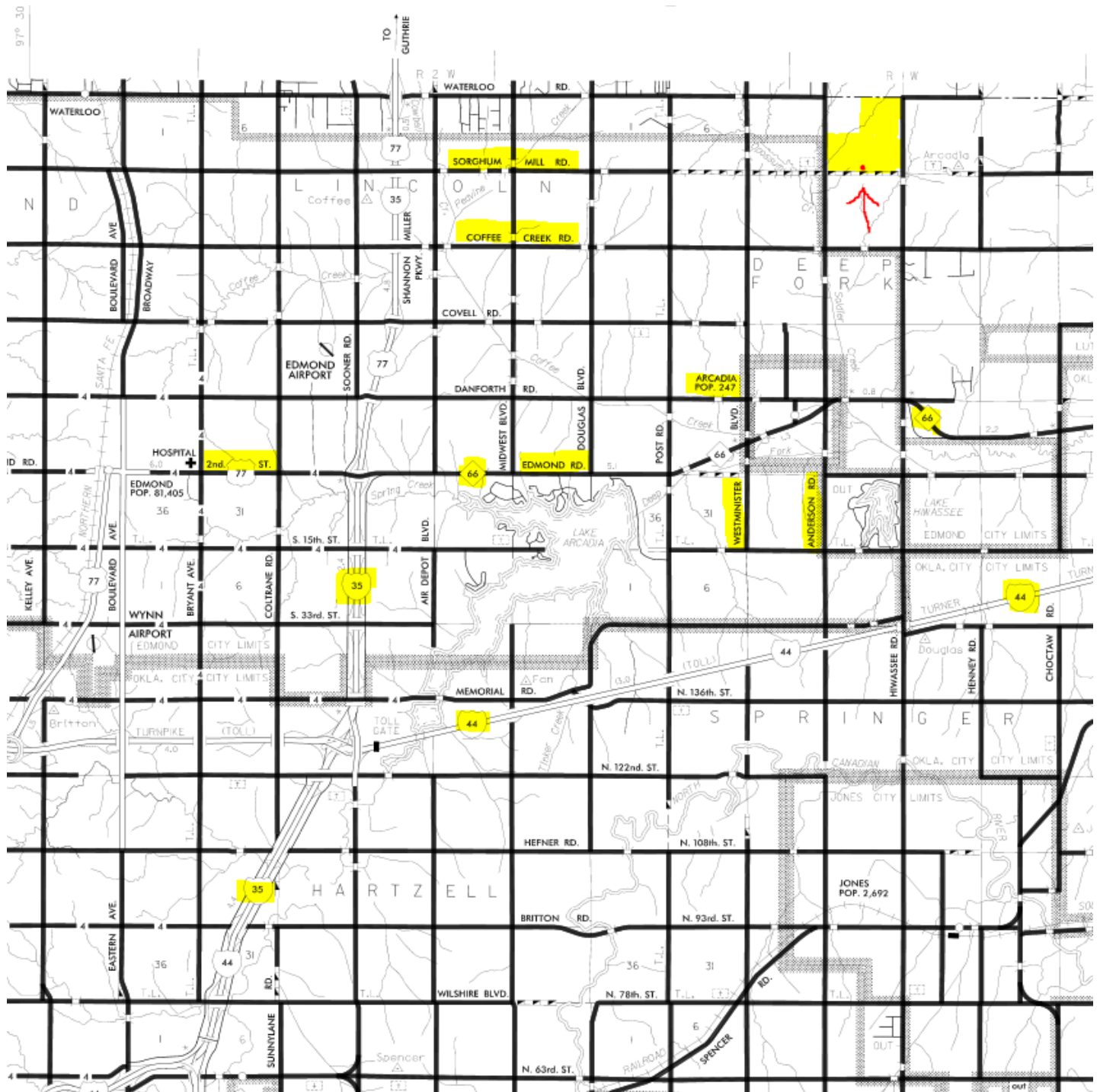
Take Westminster Road North **2 ¾ miles** to Coffee Creek Road.

Take Coffee Creek Road East **1 mile** to Anderson Road.

Take Anderson Road North **1 mile** to Sorghum Mill Road.

Take Sorghum Mill Road **½ mile** East to the OKC Gun Club Gate on the North side of the road.

Follow the signs to the clubhouse.



HIGH POWER RIFLE ENTRY FORM

Name; _____

Address; _____

City; _____ State; _____ Zip; _____

CMP#, if known _____

E-mail; _____

Matches entering:

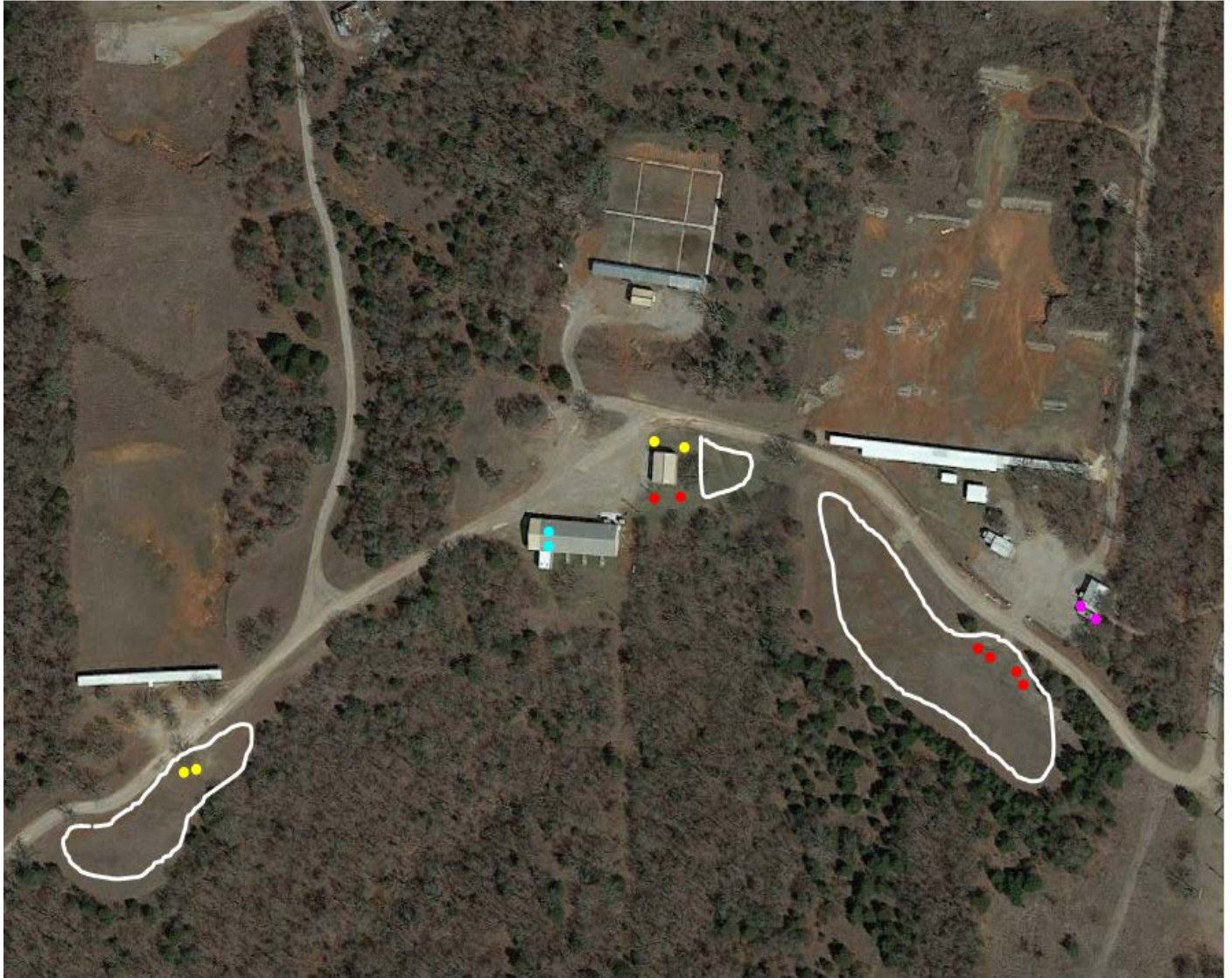
J.C. Garand Match _____ \$20.00

.30 Caliber Match _____ \$20.00

Mailing address:

Dan Arnold
5205 Deerhurst Dr.
Norman, OK 73072

dsarnold@sbcglobal.net



A guide to camping at the OKC Gun Club Range:

RED DOTS are water / electric hookups

YELLOW DOTS are electric-only hookups

BLUE DOTS are shower and restroom facilities in the clubhouse

PINK DOTS are restroom facilities at the Silhouette Range

WHITE OUTLINED AREAS are designated Tent Camping / RV parking areas: Across the road and behind the 600-yard range, East of the tractor barn near the clubhouse, and across the road and behind the silhouette range.

Please contact the Match Director for instructions and gate codes prior to arrival.